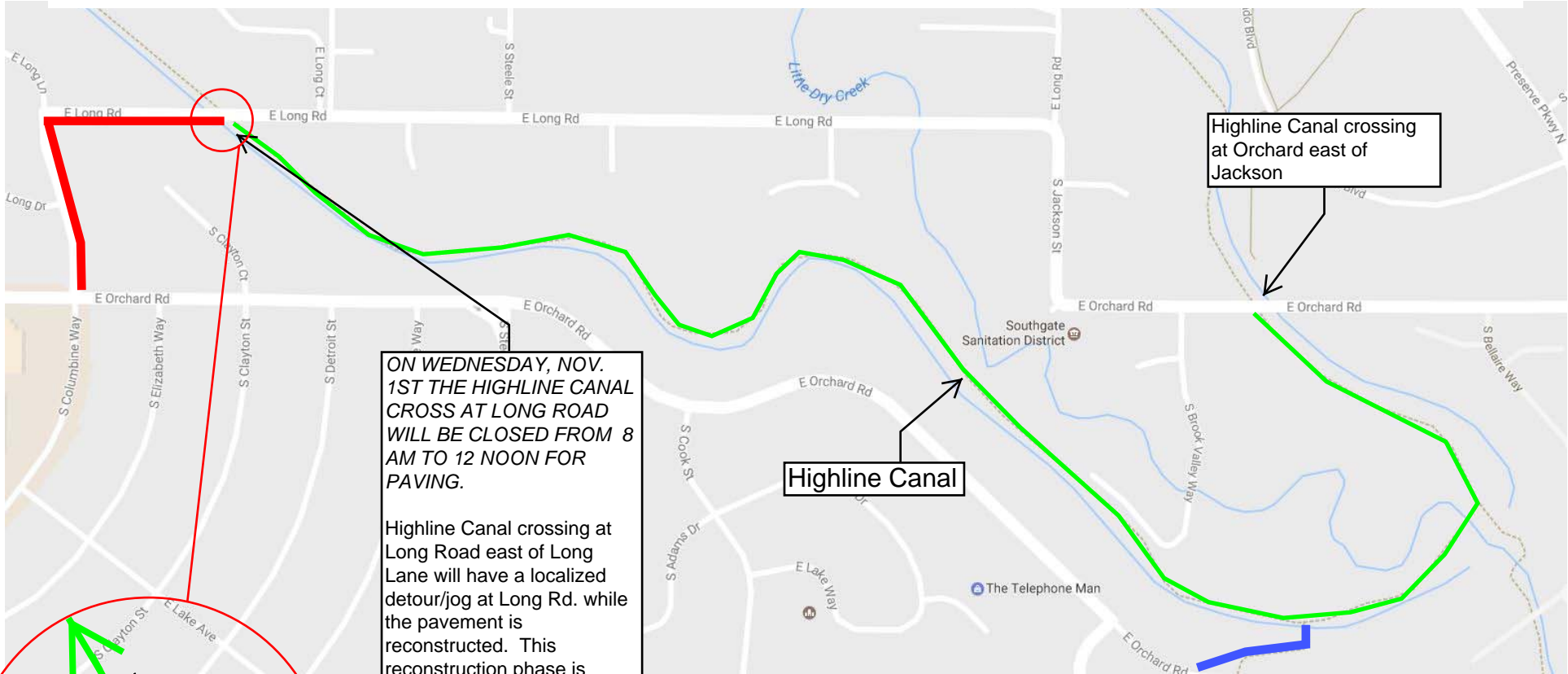
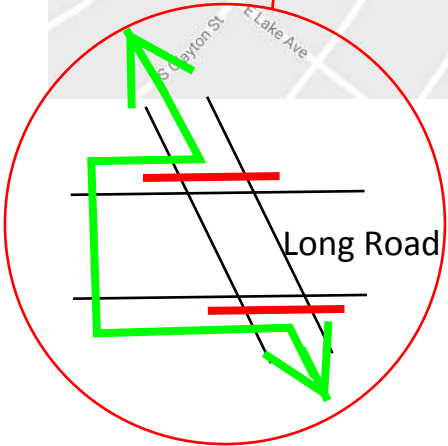


LONG ROAD RECONSTRUCTION PEDESTRIAN AND BICYCLE DETOUR ROUTE



ON WEDNESDAY, NOV. 1ST THE HIGHLINE CANAL CROSS AT LONG ROAD WILL BE CLOSED FROM 8 AM TO 12 NOON FOR PAVING.

Highline Canal crossing at Long Road east of Long Lane will have a localized detour/jog at Long Rd. while the pavement is reconstructed. This reconstruction phase is expected to last from Sept. 26 to Nov. 20.



- Walk Closed, Access to Orchard/University shopping center from west at Highline Canal crossing at University, from the east at connection to Orchard Road (see map)
- PEDESTRIAN AND BICYCLE DETOUR ROUTE